

TRADITION AND INNOVATION – 169 YEARS OF KERN

Independent and family-run, KERN is already in its 6th generation and is synonymous with quality and reliability in customer service.

FAST

- 24 hours delivery service – order today, on its way tomorrow
- Sales & service hotline from 8:00 am to 6:00 pm

COMPETENT

- DKD accreditation (DIN EN ISO/IEC 17025)
- QM system (DIN EN ISO 9001:2008)
- Initial verification by the manufacturer (2009/23/ECC)
- Medical (DIN EN ISO 13485 & 93/42/EWG)

RELIABLE

- 2+ years warranty
- Precision in weighing technology for the last 169 years

DIVERSE

- One-stop shopping: from pocket balances through to floor scales – everything from one supplier
- Find the balance you want in no time with the „Balance Quick-Finder“

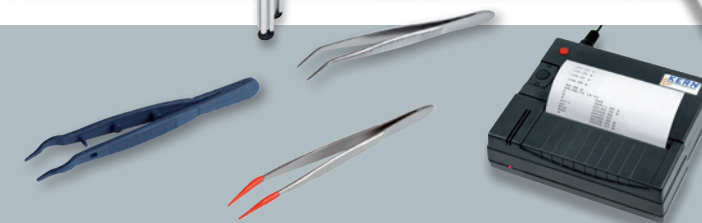
Printed in Germany
z-ob-gb-nn-201301

ACCESSORIES



KERN – Professional measuring.

GB



2013

14 Accessories



KERN Model	Page
Second data interface RS-232 CFS-A04	132
Matrix needle printer 911-013	130
Thermal printer YKB-01N	130
Thermal statistics printer YKS-01	130
Gloves for test weights 317-280, 317-290	151
Ioniser to neutralise electrostatic charge YBI-01	132
Power supply adapter set	132
Tweezers 315-242, 315-243, 315-245, 335-240	151

KERN Model	Page
RS-232 Ethernet adapter YKI-01	131
Plummet 152-532	10
Interface cable	131
Signal lamp CFS-A03	131
Software Balance Connection SCD-4.0	131
Dust brush 318-270	151
Tare pan RFS-A02	132
Universal carrying case for scales MPS-A07	132
Weighing table YPS-01	132

Printer



KERN 911-013

STANDARD



Matrix needle printer

To print the weights on normal paper, which is ideal for long-term archiving.

Technical data:

- Needle print
- Speed: 0,75 lines/sec
- max. 40 characters per line
- Paper stripes: 57 mm wide
- Operation via mains adapter 230V/50Hz (standard)
- Dimensions:
WxDxH 105x180x90 mm

- Interface cable not included with delivery
- Please state your balance model when ordering, so that the printer can be preconfigured in the factory to suit your balance.

Price printer without interface cable,
KERN 911-013

Accessories:

Paper rolls (10 pieces),
KERN 911-013-010



KERN YKB-01N

STANDARD



Thermal printer

For printing results, recipes, quantities etc. or for GLP record keeping of balance adjustment with date and time print. Language versions: D, GB, F.

Technical data:

- Thermal print
- Speed: 0,75 lines/sec
- max. 40 characters per line
- Paper stripes: 112 mm wide
- Operation via mains adapter: 230 V/50 Hz (standard)

- Dimensions:
WxDxH 165x140x50 mm

• Interface cable not included with delivery

Please state your balance model when ordering, so that the printer can be preconfigured in the factory to suit your balance.

Price printer without interface cable,
KERN YKB-01N

Accessories:

Paper rolls (10 pieces),
YKB-A10



KERN YKS-01

STANDARD



Statistics thermal printer

For printing results, recipes, etc. or for GLP record keeping of balance adjustment with date and time print. Numerator; with statistical functions such as count and total of all measurements, minimum and maximum values of the main unit, range (Max-Min). Average value, standard deviation, available units: mg, g, kg, pcs. Language versions: D, GB, F.

Technical data:

- Thermal print
- Speed: 0,75 lines/sec
- max. 40 characters per line
- Paper strip: 112 mm wide

- Operation via mains adapter: 230 V/50 Hz (standard)

- Dimensions:
WxDxH 165x140x50 mm

• Interface cable not included with delivery

Please state your balance model when ordering, so that the printer can be preconfigured in the factory to suit your balance.

Price printer without interface cable,
KERN YKS-01

Accessories:

Paper rolls (10 pieces),
KERN YKB-A10

001:	0.366 g
002:	0.363 g
003:	0.357 g
004:	0.354 g
18/05/11	15:01
n	004
Σ	00001.44 g
x	00000.31 g
σ ⁿ⁻¹	00000.14
σ ⁿ	00000.44
Min	00000.00 g
Max	00000.36 g
R	00000.36 g

- ← Measured value 001
- ← Measured value 002
- ← Measured value 003
- ← Measured value 004
- ← Date / Time
- ← Number of test results
- ← Sum of all test results
- ← Mean value of all test results
- ← Standard deviation of the basic totality
- ← Standard deviation of a random sample
- ← Minimum value of the basic totality
- ← Maximum value of the basic totality
- ← Span of the basic totality
(maximum value – minimum value)

Printout sample KERN YKS-01: Statistics



Individual header data: If noted on the balance, for printers **KERN 911-013, YKB-01N** the free software **KERN SHM-01** (see internet) can be used to print 4 header lines on the printout. Compatible models: KERN 440, DE, FCB, FKB-A, PCB, PCD.

Accessories

Interface cable for RS-232

for direct connection to a printer or PC, cable length approx. 1.5 m.
The interface parameters can be set using the balance keypad.

Printer →	YKB-01N + PC + 911-013 Order No.	YKS-01 Order No.	
Scale ↓			
440, AL...-A, ALT-B, CDE, DBS, DLB, DE-D, DLT, EMB-V, FCB, FKB-A, KMB-TM, KMS-TM, KMT-TM, NDE, PCB, PCD, PKS, PKP, PKT, 572, 573, CDS, CKE, DS, FKB, FKT, KB, IKT, PL...-A, PL...-F, PLT		572-926	
BFB, BFN, CFS, CPB-N, GAB-N, IFB, KFB-TM, KFN-TM, NFB, PFB, SFB, UF...		CFS-A01	
EW, EW-N, EG-N, PE... Printer connection (unidirectional)		474-926	
ABT, PBS, PBJ, ABS/ABJ (year of production 2000-2012)		770-926	
AES-N, AEJ-NM, BTEP, ILJ, ILS KME, NTEP, PLJ-N, UTEP, UTEP		MLB-A05	
BFS, IFS, KFS-T, MLB, MLS, ILS, ILJ	MLB-A05	-	
ABJ-NM, ABS-N		ACS-A01	

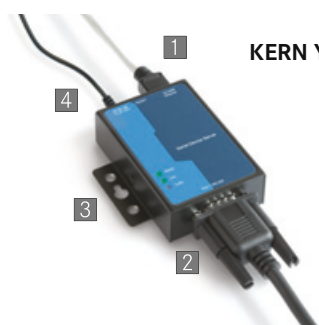


Note:

The interface cable is **free of charge** if you purchase the balance and printer together.



KERN YKI-01



Ethernet adapter KERN YKI-01

Adapter to connect balances, force measuring devices etc. with an RS 232 interface ² to an IP-based Ethernet network ¹. The adapter allows direct integration of measuring devices into most company networks, with automatic configuration using DHCP or statistical IP allocation. You can access the current measuring data at any time over the whole network, without having to use additional cables. The adapter supports a wide range of configuration options using the enclosed administration software or through the web interface. The driver delivered with the goods allows you to access the measuring device with existing, non-network-compatible applications using a virtual COM port.

Compatible with **KERN BalanceConnection software**. Suitable for wall mounting ³, DIN track mount ³ or free-standing. Scope of supplies: RS 232 Ethernet adapter with 1x Port RS 232 ¹, mains adapter ⁴, CD (driver, software, operating instructions), adhesive feet.

Note: To connect to your network, you will need information from your network administrator. You should discuss connecting your device into your network with the administrator before you place your order.

KERN YKI-01

Software Balance Connection

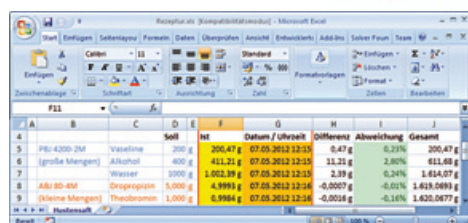


- Interface cable included. Please specify balance model when ordering (see interface cable table)

Benefits:

- Typing errors during manual transfer, for example, are avoided
- GLP-compliant lab software

KERN SCE-4.0



2nd RS-232 data interface,

separate Y cable, e.g. for simultaneous connection of a printer, signal lamp etc. Suitable for BFB, CPB-N, CFS, GAB-N, IFB, KFB-TM, NFB, UFA, UFB

KERN CFS-A04



KERN CFS-A03

Signal lamp

for visual support of weighing with tolerance range. Three-colour LED, red, green, yellow. Suitable for series GAB-N, CPB-N, IFB, NFB, KFB-TM (on request: BFB, UFB). Total dimensions WxDxH 100x180x300 mm,

KERN CFS-A03

For the direct transmission of balance data to Windows applications (operating systems XP, Vista, Windows 7)

- Transfer via RS-232 to the PC, e.g. to MS Excel
- Transfer at the touch of a key or on a time-controlled basis
- Date and time can be given at any time
- The interface protocols for KERN balances are already predefined



KERN YBI-01



Ioniser to neutralise electrostatic charge

Features:

Goods to be weighed which are non-conductive, such as plastic, china, glass, etc often carry electrostatic charge. The electromagnetic field which then occurs between the goods to be weighed and the balance can cause the weighing result to be distorted by up to a gramme.

Therefore, when weighing in milligrammes or even smaller increments, we recommend neutralising the electrostatic charge with the KERN AC-Korona discharge ioniser.

With the mount 1 supplied with the ioniser, it can be positioned conveniently next to the balance or you can manually direct it from all sides onto a particular item to be weighed 2.

Technical data:

- **Neutralisation:** $\pm 20V$
- **Discharge of ozone:** 0,04 ppm/h
- **Dimensions:** WxDxH 97x53x31 mm, WxDxH 150x150x90mm incl. mount
- **Net weight:** ca. 0,11 kg ca. 0,55 kg incl. mount
- **Mains connection:** 110-230V/50Hz, AC power supply, 12V DC output

KERN YBI-01

STANDARD



KERN YPS-01

Weighing table

Features:

Accurate measuring results require stable working conditions! The KERN YPS-01 weighing table has been constructed to absorb vibrations and oscillations, which would otherwise distort the weighing result.

The YPS-01 weighing table consists of:

- 1 Polished marble plate (36 kg) as integrated working surface, positioned on absorbing rubber components
- Work table with aluminium profile frame and height-adjustable feet

Technical data:

- **Dimensions:** WxDxH 800x600x782 mm
- **Dimensions marble plate:** WxD 400x450 mm
- **Net weight:** ca. 54 kg

1 Dispatch complete on pallet. Please ask for dimensions, gross weight, shipping costs.

KERN YPS-01



KERN MPS-A07

Sturdy transport case

for the safe transport and storage of series EOE, EOB scales with weighing plate size $\leq 315 \times 305$ mm without stand; inner dimensions WxDxH 425x315x65 mm,

KERN MPS-A07



KERN RFS-A02

Power supply adapter set

from standard EU to UK/US/AUS/CH etc. Four off. Ideal for devices with Class II protection (without earth). Ideal for Euro moulded plug,

KERN YKA-02

Tare pan

made from stainless steel. Ideal for weighing loose screws, small parts, etc., fruit, vegetables, cheese, etc. BxTxH 370x240x20 mm, Net weight approx. 524 g,

KERN RFS-A02



KERN YKA-02